

# REGION D WATER PLANNING

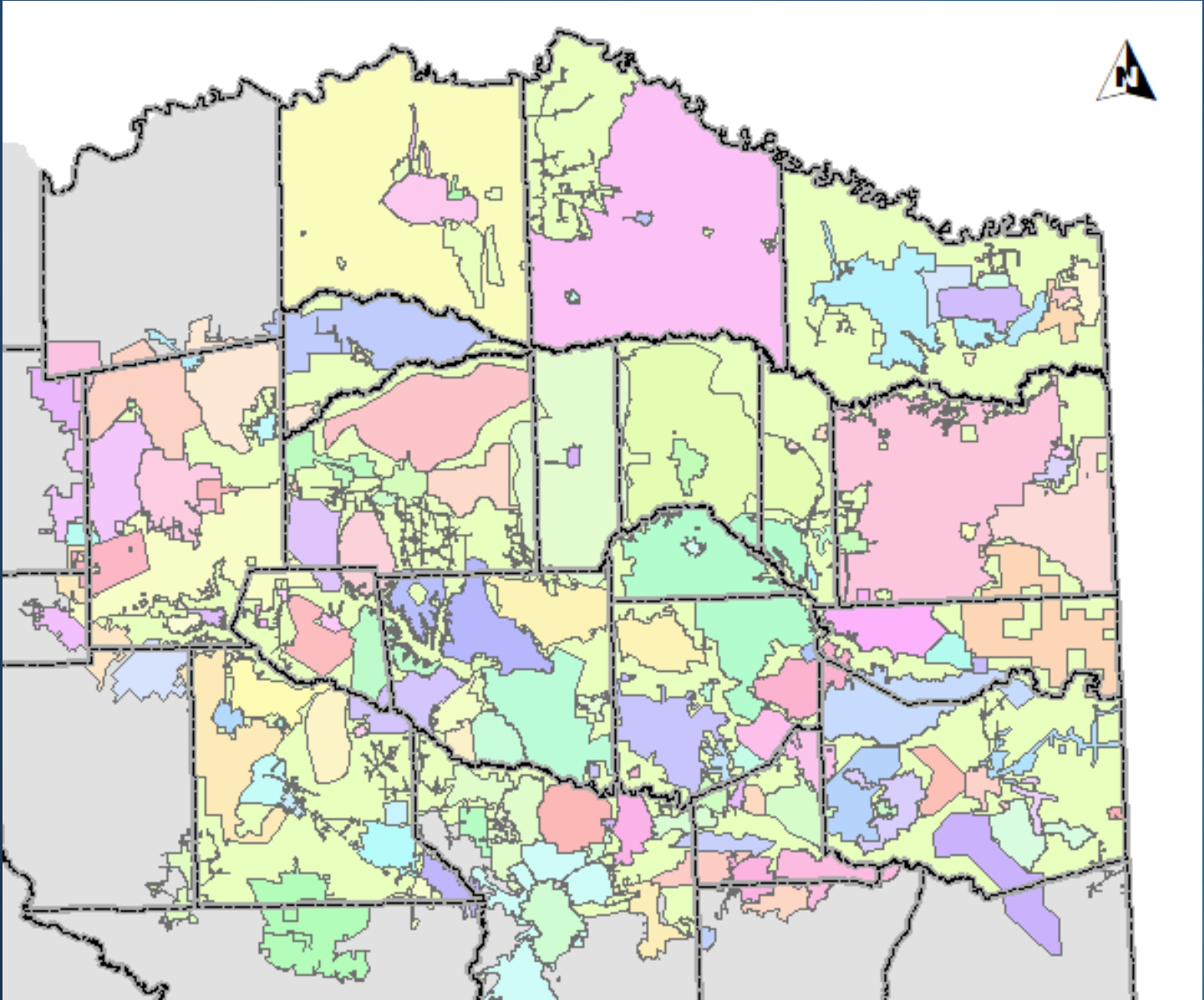


**carollo**®

Tony Smith, P.E.

MOUNT PLEASANT, TX // MARCH 19, 2020

# REGIONAL WATER PLANNING



# Working Schedule: Fifth Cycle of Regional Water Planning (October 2018)<sup>A</sup>

ITEM	ENTITY	ACTIVITY	Planning Task #	2016			2017			2018			2019			2020																			
				J	F	M	A	M	J	J	A	S	O	N	D	J	F	M	A	M	J	J	A	S	O	N	D	J	F	M	A	M	J	J	A
1	TWDB	Release list of new municipal WUGs under utility boundary process	2B																																
2	TWDB	Draft population and mining, and municipal demand projections prepared and made available by the TWDB	2A, 2B																																
3	RWPG	Identify any optional sub-WUGs for RWPA so the TWDB can incorporate these entities into the DB22 data structure	2B																																
4	TWDB	Draft livestock, irrigation, manufacturing, and steam-electric power demand projections made available by the TWDB	2A																																
5	RWPG	Review draft projections and finalize adjustments and WUG list with TWDB staff	2A, 2B																																
6	TWDB	TWDB Board adopts all projections	2A, 2B																																
7	TWDB/RWPG	DB22 prepared and released for data entry <sup>B,C</sup>																																	
8	TWDB/RWPG	DB22 consultant training																																	
9	RWPG	Evaluate water availability and existing water supplies	3																																
10	RWPG	Identify water needs	4A																																
11	TWDB	"As of" date for needs in DB22 to be utilized for the socioeconomic impact analysis	6																																
12	RWPG	Identify potentially feasible WMSs	4B																																
13	TWDB	New modeled available groundwater (MAG) volumes issued by the TWDB based on updated desired future conditions	3																																
14	TWDB	TWDB planning rule revisions																																	
15	TWDB/RWPG	Next RFA for regional water planning grant (public notice, remaining SOW, total study cost)																																	
16	TWDB/RWPG	Amend Contracts with additional funding <sup>D</sup> (WMS evaluation funding to remain as notice-to-proceed)																																	
17	TWDB	Review and negotiate SOW submittals for WMS evaluations and issue notice-to-proceeds <sup>D</sup>	5A																																
18	RWPG	Prepare and submit Technical Memorandums	4C																																
19	TWDB	Socioeconomic impact reports distributed to RWPGs	6																																
20	RWPG	Complete the 2021 regional water plans	ALL																																
21	SHC	Stakeholder committee meet to consider uniform standards for 2021 project prioritizations																																	
22	RWPG	Prepare and submit project prioritizations from 2021 regional water plans	12																																

Note A: Estimated timeline based on currently available agency resources and subject to change

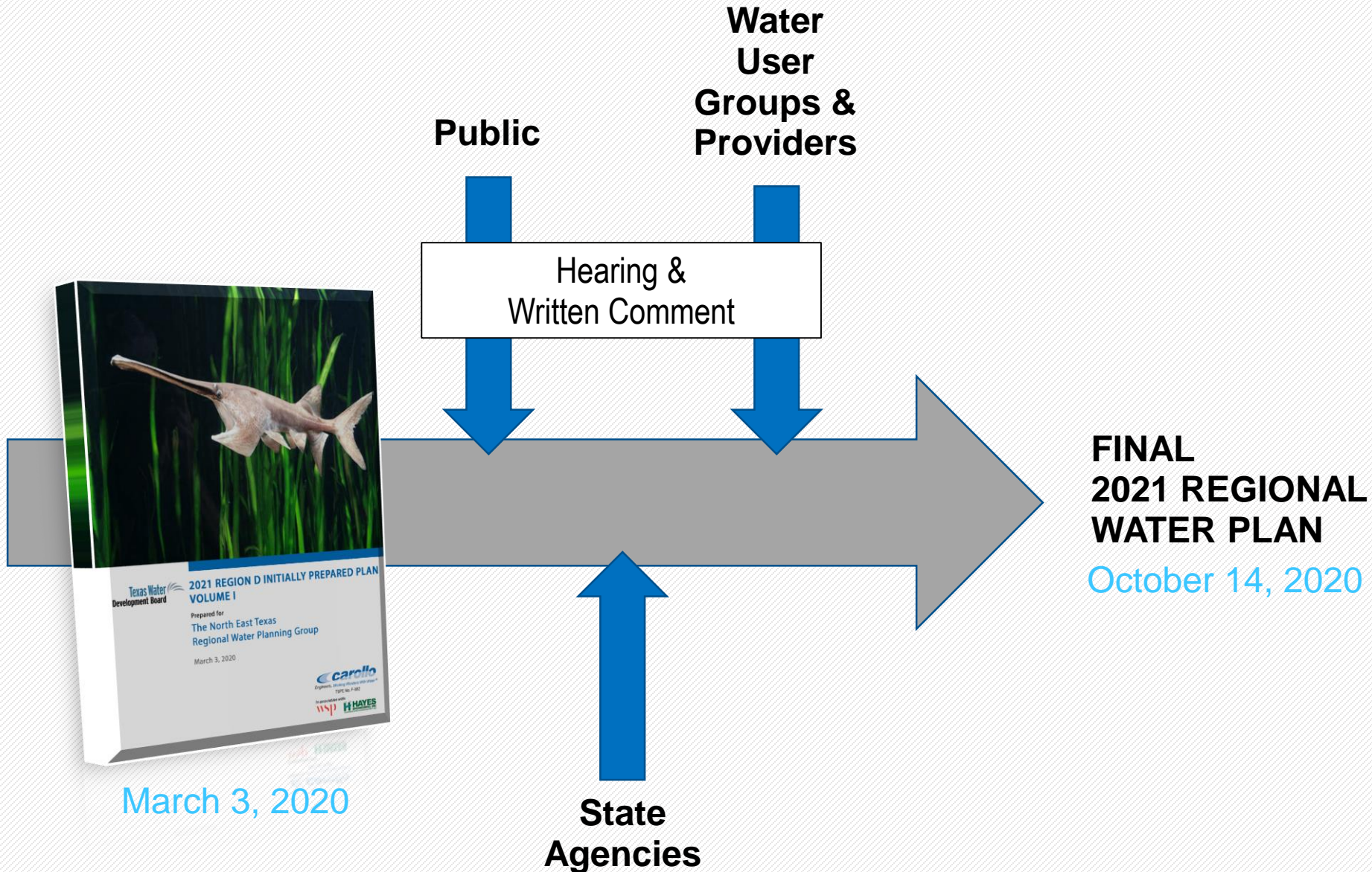
Note B: DB22 is the updated, online water planning database for the 2022 State Water Plan

Note C: Anticipated database availability dates are estimates based on currently available agency resources

Note D: Subject to available funding

- RWPG activity =
- Contracting activity =
- TWDB activity =
- Database activity =

# From Draft to Final



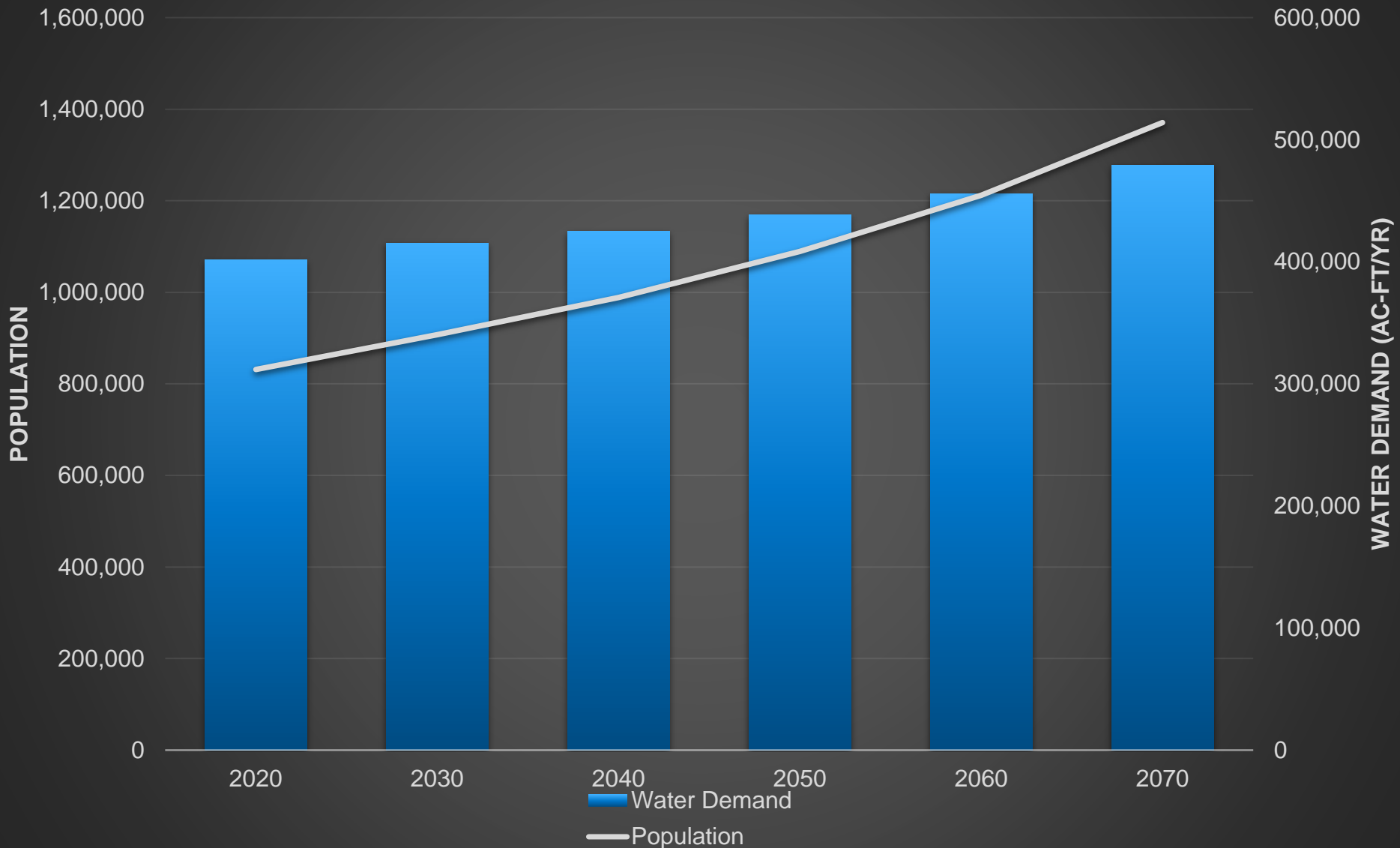
# What does the Region D Plan say?

*Supply + Demand = Shortage or Surplus*

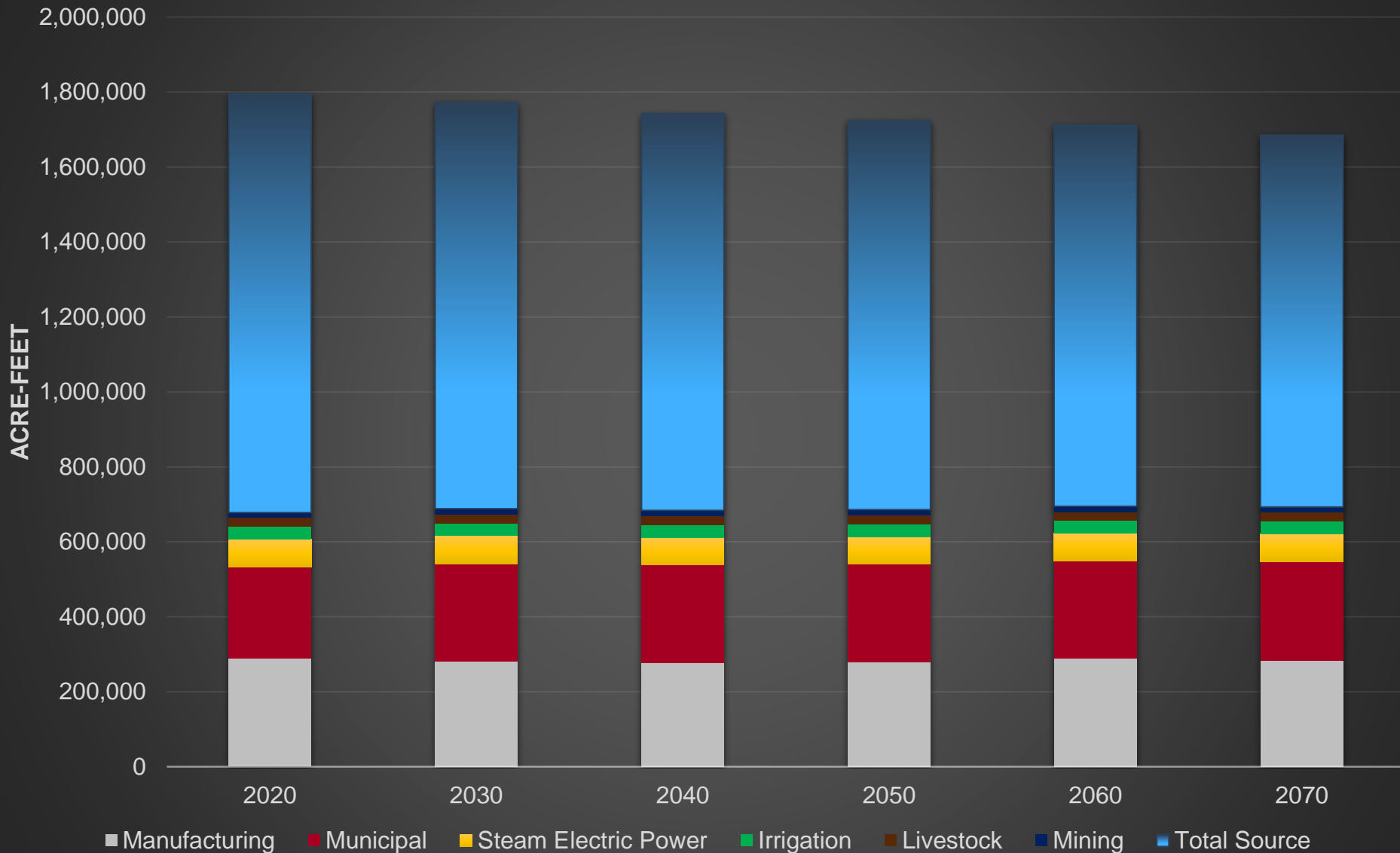
- Determine ways to conserve water supplies*
- Determine how to meet future water supply needs*
- Determine strategies to respond to future droughts*



# Projected Growth of North East Texas (2020 – 2070)



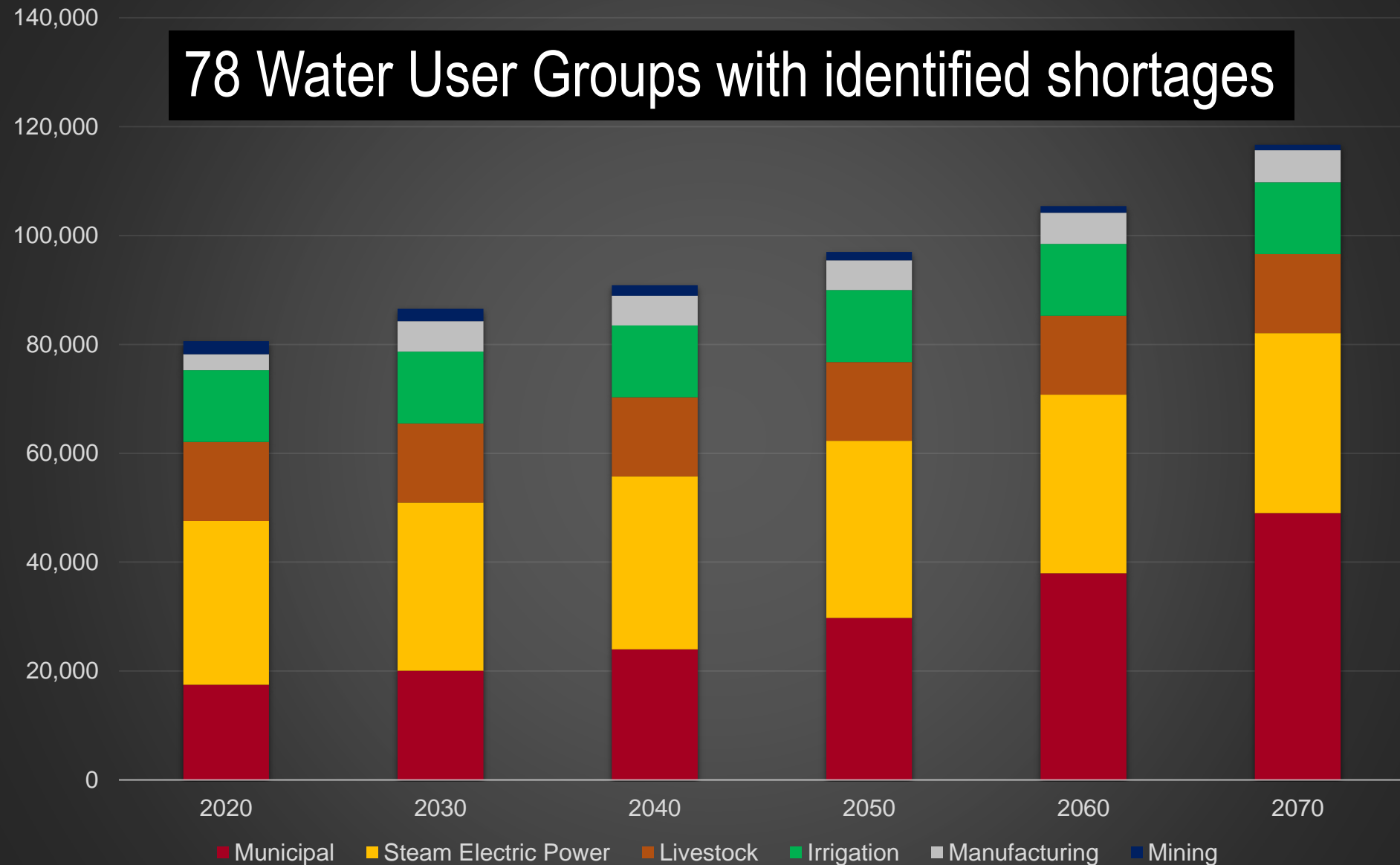
# How much water is potentially available in North East Texas (source), and how much can we currently access (supply)?





# How much water is needed to meet projected shortages in North East Texas?

78 Water User Groups with identified shortages





# How does North East Texas meet these future water supply needs?

## Recommends 112 Water Management Strategies

- ❑ 29 contractual
- ❑ 8 conservation
- ❑ 59 groundwater supply
- ❑ 3 voluntary reallocation
- ❑ 2 livestock supply
- ❑ 1 reuse
- ❑ 10 infrastructure

County	Entity	Projected Demand / Recommendation (ac ft) by decade						Strategy
		2020	2030	2040	2050	2060	2070	
IOWIE	RIVERBEND WATER RESOURCES DISTRICT	-523	-536	-539	-537	-537	-537	Riverbend WMS
		13,810	73,099	80,081	88,793	97,520	115,820	
IOWIE	Riverbend Water Resources District	0	1370	1423	1496	1493	1493	New 2.5 MGD Package WTP And Transmission Line
HUNT	Celeste	-29	-52	-86	-136	-209	-316	Treated Pipeline And New Contract
		0	0	0	0	0	87	
HUNT	Greenville	-3,239	-4,626	-6,531	-9,183	-12,913	-18,266	WTP Expansion (15 MGD)
		0	9,335	9,335	9,335	9,335	9,335	
HUNT	Greenville	0	0	0	0	0	9,335	New WTP (15 MGD)
HUNT	Hickory Creek SUD	-96	-273	-519	-866	-1,366	-2,095	Greenville Tie-In Pipeline
		96	273	519	866	1,366	2,095	
HUNT	Wolfe City	0	0	0	-54	-157	-308	Greenville Tie-In Pipeline
		0	0	0	54	157	308	
AMAR	Irrigation Lamar	-1,468	-1,468	-1,468	-1,468	-1,468	-1,468	Pat Mayse Raw Water Pipeline
AMAR	Livestock Lamar	1,468	1,468	1,468	1,468	1,468	1,468	Livestock Water Pipeline
RED RIVER	Clarksville	-617	-617	-617	-617	-617	-617	Contract With Riverbend WRD And Treated Water Pipeline Tr Dekalb
		617	617	617	617	617	617	
RED RIVER	Clarksville	-237	-231	-222	-221	-219	-219	Contract With Riverbend WRD And Treated Water Pipeline Tr Dekalb
		237	231	222	221	219	219	

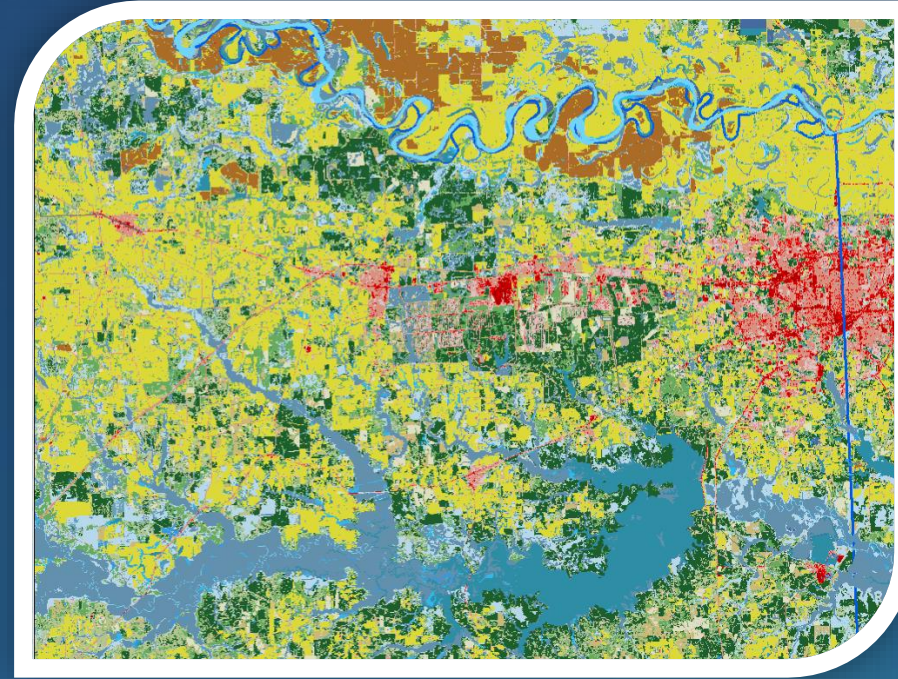
# Considerations of the Plan

## Impacts and Consistency of the Plan

- Water Quality
- Navigation
- Moving water from agricultural and rural areas
- Socio-economic impacts of unmet needs

## Consistency with the long-term protection of Texas':

- Water
- Agricultural Resources
- Natural Resources
- Provides information regarding Region D position on proposed Marvin Nichols Reservoir (a Region C strategy not recommended within the Region D Plan)



“It has been, and continues to be the position of the NETRWPG that due to the significant negative impacts upon environmental factors, agricultural resources/rural areas, other natural resources, and third parties, Marvin Nichols I Reservoir should not be included as a water management strategy in any regional water plan or the State Water Plan.”

“Per the terms of agreement set forth from the October 5, 2015 mediation between Regions C and D and ratified by the NETRWPG at its October 21, 2015 meeting, the NETRWPG does not challenge Marvin Nichols Reservoir as a unique reservoir site for the purposes of this Plan. At the time of publication of this Initially Prepared Plan, no agreement has been made between Regions C and D for the purposes of the 2021 Region D Plan.”

# Recommendations

## Unique Stream Segments

- Conditional recommendation
- Pecan Bayou,
- Black Cypress Bayou, and
- Black Cypress Creek

## *Identifies Voluntary Instream Flow Goals*

## Reservoir Site Identification

- Supports Sabine River Authority proposal for Prairie Creek Reservoir, if used in conjunction with a pipeline from Toledo Bend to supply water to both Region D and Region C.

## Legislative

- Marvin Nichols
- Giant Salvinia
- Toledo Bend Reservoir and Pipeline
- Mitigation
- Compensation
- Improvements to the Planning Process

# Where can you find the Initially Prepared Plan?

*In each of the 19 counties'*

- Library
- County Clerk
- North East Texas Municipal Water District website:

<http://www.netmwd.com>





# REGION D WATER PLANNING



**carollo**<sup>®</sup>

MOUNT PLEASANT, TX // MARCH 19, 2020